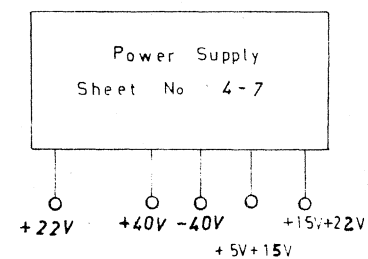
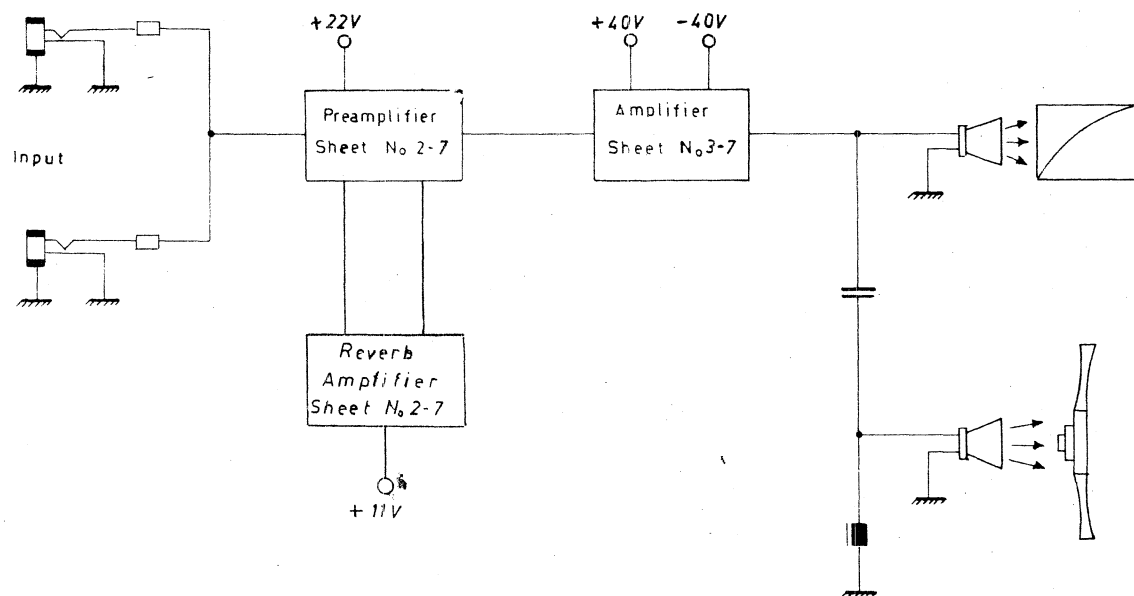


ELKA

ELKATONE

610

schematic diagrams

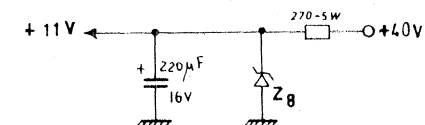
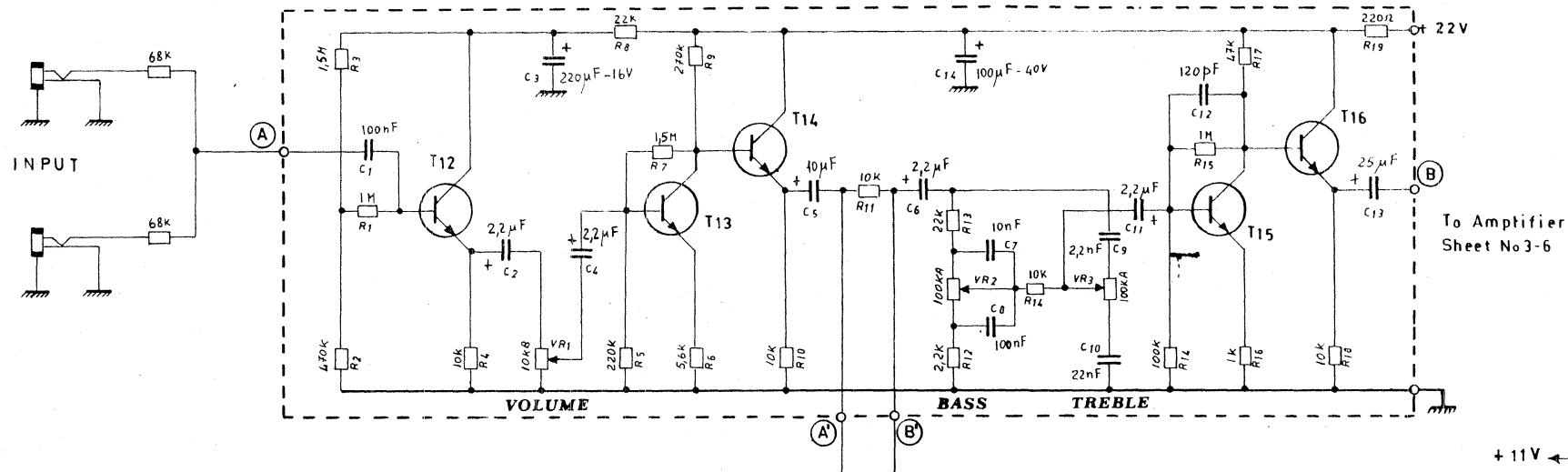


Designed by
S. S. S.

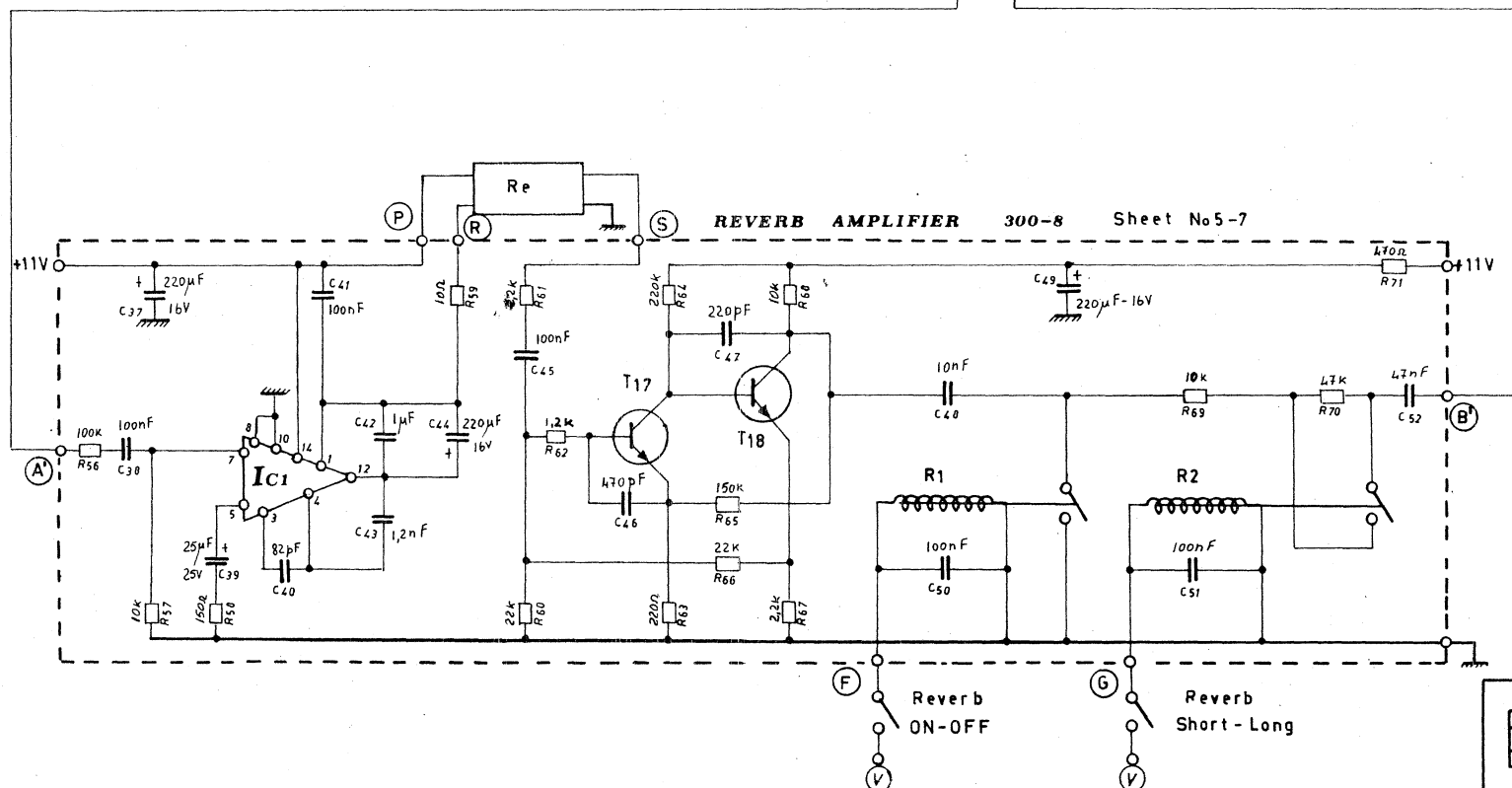
Drawn by
H. S. S.

Checked by
S. S. S.

	Model Elkatone 610	Object: Block Diagram	Sheet No 1-7
			Date 20-2-75



Z8 = TZ 111



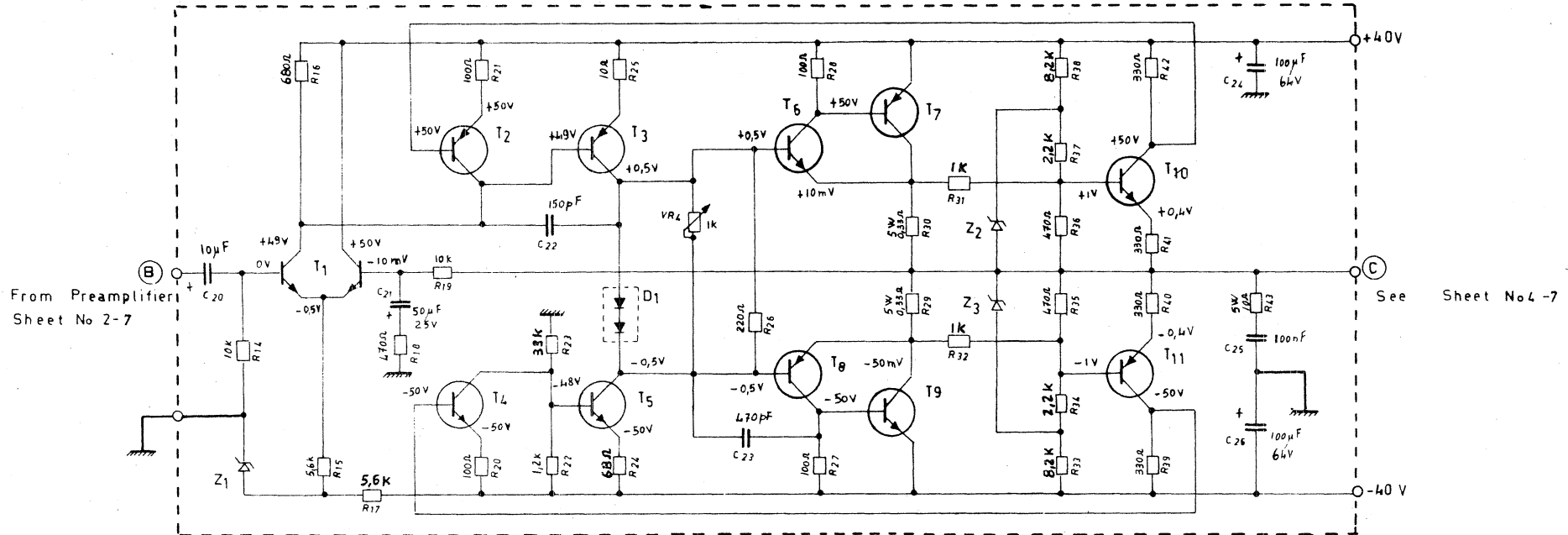
Code	Type	Transistors
T12 ÷ T18	NPN	BC 209 Fairchild etc..... or MPS A09 Motorola

R1 = R2 = 1005 1125. 1012. ARCO 288Ω
Re = Reverb Unit, Hammond type

IC1 = TA 611 A 12 SGS.

	Model Elkatone 610	Object Preamplifier and Reverb Amplifier	Sheet No 2-7
			Date 24-11-75

AMPLIFIER 300-2 Sheet No 5-7



Code	Type	Transistors
T1	NPN	MD 8002
T2	PNP	MPSA 70 Motorola
T3 - T8	PNP	MPSU 56 or BD 520 Motorola
T4	NPN	MPSA 20 Motorola
T5 - T6	NPN	MPSU 06 or BD 519 Motorola
T7	PNP	MJ4502 Motorola
T9	NPN	MJ802 Motorola
T10	NPN	MPSL01 Motorola
T11	PNP	MPSL51 Motorola

D1 = MZ 2361

Z1 = 1N5240

Z2 = 1N5236

Z3 = 1N5236

Note:

All resistors are $\frac{1}{2}$ W unless otherwise indicated



Model
Elkatone
610

Object:
Amplifier

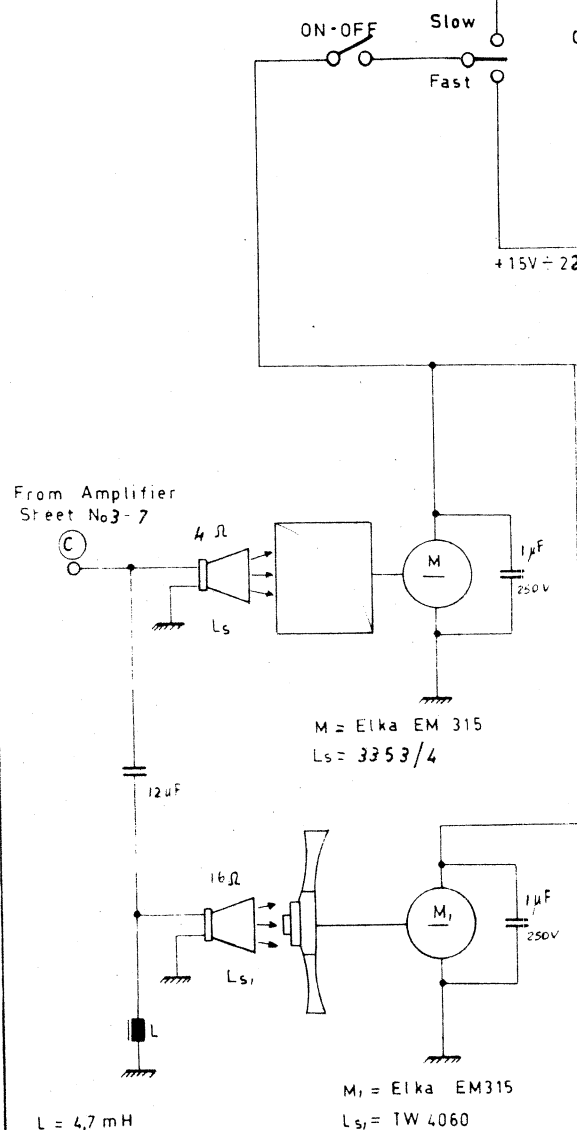
Sheet No3-7

Date 6-5-75

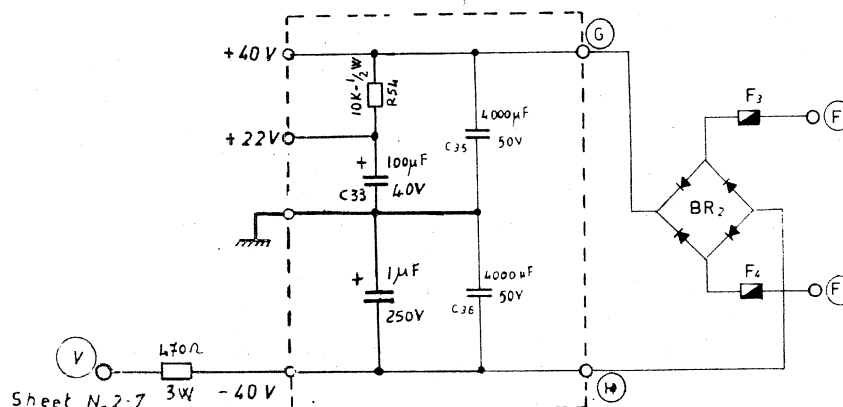
N.B. The tension indicated in the power supply of the two velocities of the motor have been registered with the slow and fast potentiometers at maximum

AMP 5

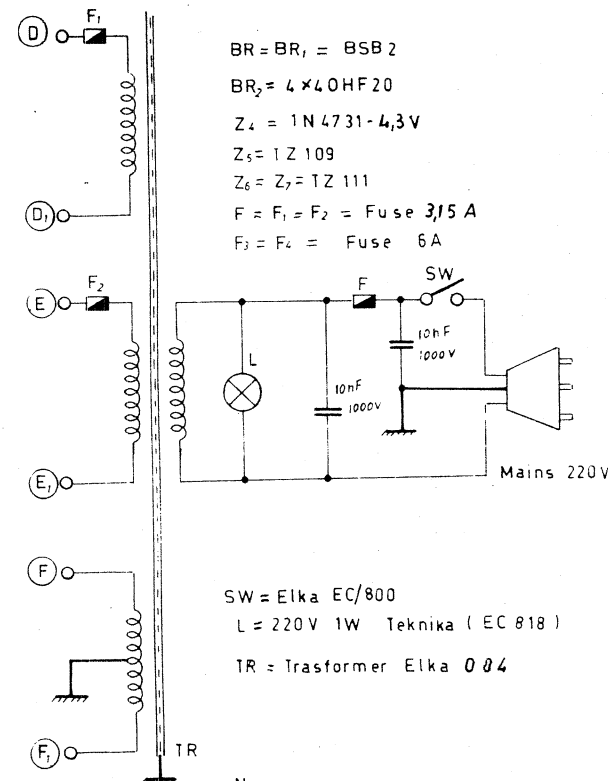
POWER SUPPLY AMP 4



POWER SUPPLY M000566

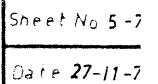


Code	Type	Transistors
T12-T15	NPN	2N3055 Fairchild Mistral
T13-T14	NPN	2N5856 Fairchild or BC 286 SGS
T16-T17	NPN	2N5856 Fairchild or BC 5856 SGS

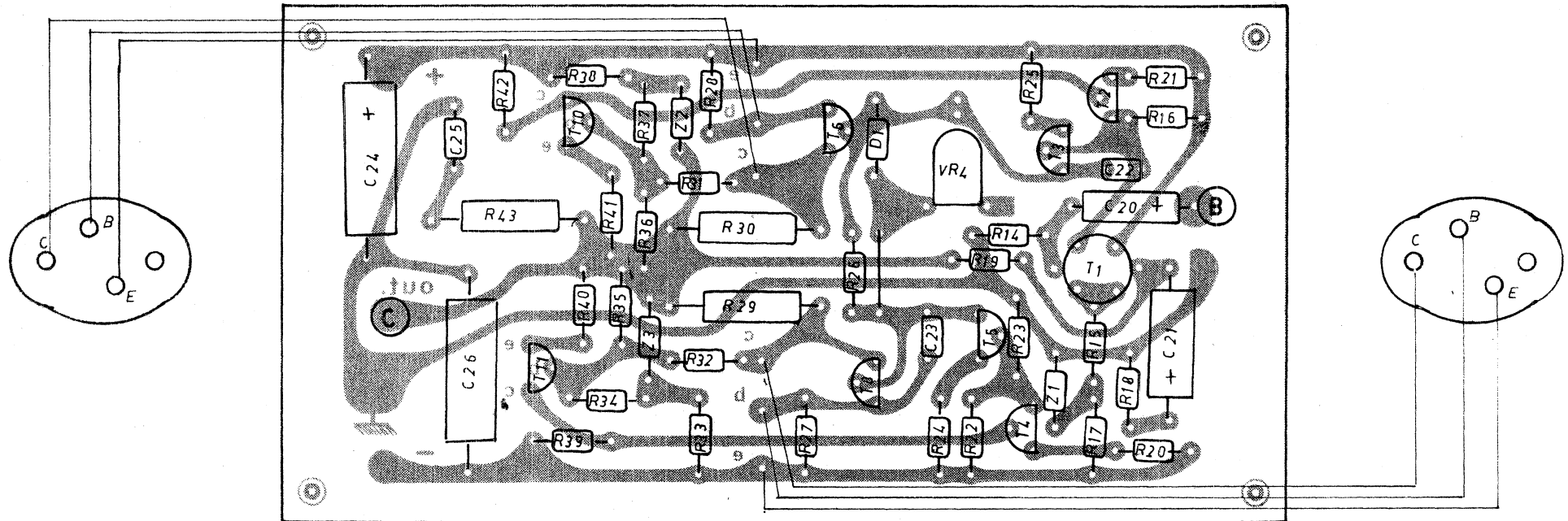


Note:
 All resistors are $\frac{1}{2} W$
 unless otherwise indicated

	Model	Object:	Sheet No4-7
	Elkatone 610	Power Supply	Date 19-2-75



300 - 2



Model
ELKATONE
510

Object:
Assembly of
Printed Circuit

Sheet No 6-7
Date 27-11-7



Object:
Assembly of
Printed Circuit

Sheet No 7-7
Date 27-2-75