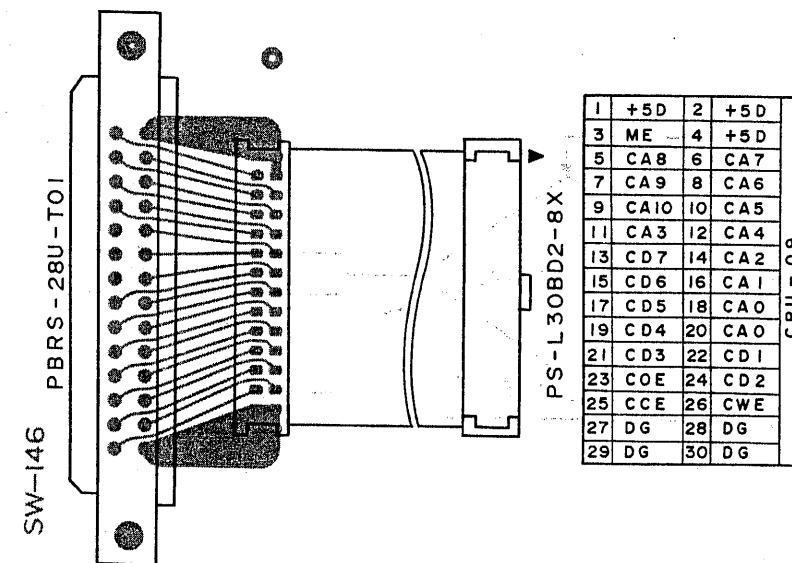
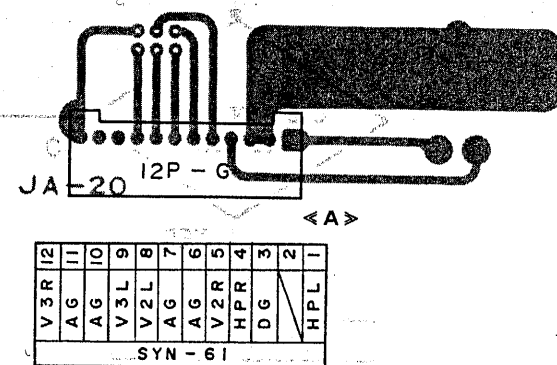
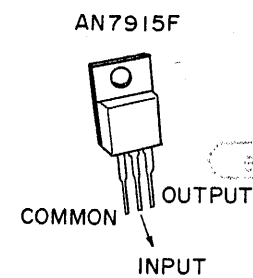
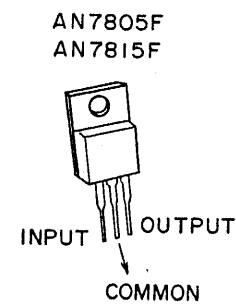
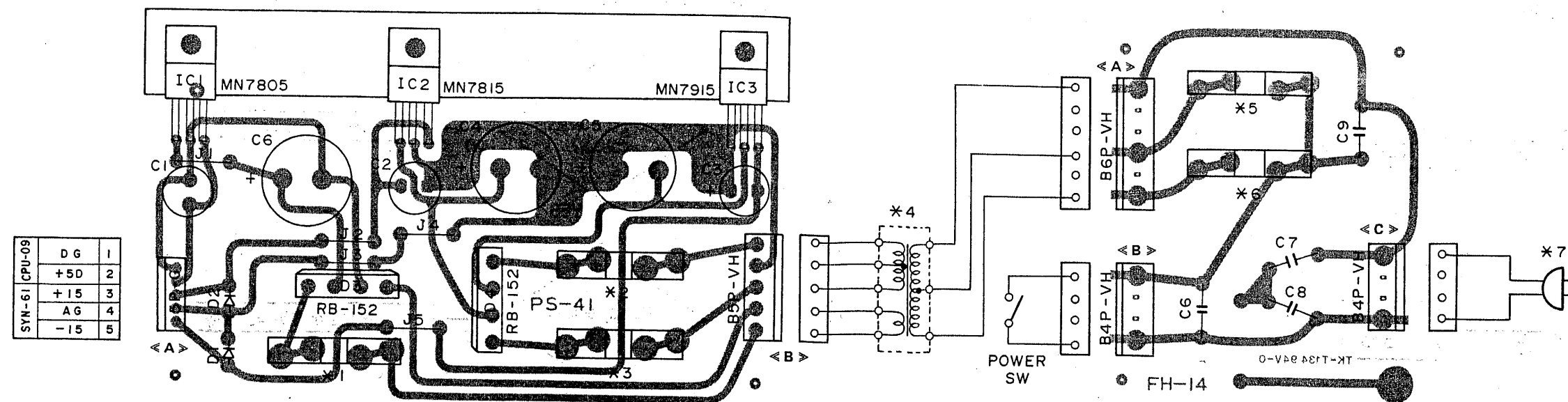


12. [FH-14], [PS-41], [JA-20], [SW-146] PRINTED CIRCUIT BOARD



	Description	Japan	General	U.S.A.	Canada	NE
*1	Fuse	1.0A	1.0A	1.0A-250V	1.0A-250V	T-1.0A
*2	Fuse	0.8A	0.8A	0.8A-250V	0.8A-250V	T-0.8A
*3	Fuse	0.8A	0.8A	0.8A-250V	0.8A-250V	T-0.8A
*4	Power Transformer	TSE-246-D		TSE-246-U		
*5	Fuse	—	0.5A	—	—	T-0.5A
*6	Fuse	0.5A	0.5A	0.5A-250V	0.5A-250V	T-0.5A
*7	AC Cord					
C6~9	Capacitor	DEFZ103PVAI-KC	DE7150FZ103PVAI-KC	DE7150FZ103PVI-KC	DE7150FZ103PVI-KC	DE7150FZ103PVI-KC

[IC]

IC No.	Name	Code No.	Abstract
IC1	AN7805F	802888	Positive Voltage Regulator
IC2	AN7815F	802889	Positive Voltage Regulator
IC3	AN7915F	802890	Negative Voltage Regulator

[Diode]

D1, 2	DSK10B	802898
D3, 4	RB-152	706319